



Ken & Alli

Saturday, January 21

7:30 PM

\$10.

Purchase tickets thru
www.lynchburgtickets.com
or at Bower Center

Available in advance or at the door

Ken Horne and Allison Johnson, formerly with "Generic Folk", are now performing as the vocal duet "Ken and Alli". Their stage show spans several centuries and many genres of American folk music. From contemporary Americana to sixteenth century Childe ballads, from classic blues to country music standards (and some that ought to be), Ken and Alli offer a variety of musical styles and arrangements that can only be described as delightfully eclectic. Allison's sparkling lead vocals and intricate harmonies blend perfectly with Ken's rich baritone. Accompanied by finger style guitar and six string banjo with an occasional harmonica bit thrown in, Ken and Alli create an evening of music that is entertaining, inspirational, and mostly, a whole lot of fun.

Mark your calendar !!!
Annual Crawfish Fest
May 26, 2012

The Wharton Foundation's
BOWER CENTER
for the ARTS

JANUARY
2012

305 N BRIDGE STREET, BEDFORD VA 24523

(540) 586-4235 WWW.BOWERCENTER.ORG

OFFICE/GALLERY HOURS: WEDNESDAY - SATURDAY 11AM-4PM

CLASSES/EVENTS ANY DAY/TIME

The League of Roanoke Artists

in an invitational exhibit - ends Jan 14, 2012

Black & White

A judged all-media theme exhibit

January 25-March 17

Judge: Ann van de Graaf

Ann van de Graaf is an accomplished artist who opened Africa House .The gallery is at 2238 Garfield Avenue in Lynchburg VA.

Opening reception & awards: Sunday, Feb 5, 2PM-4

Snow date: Feb 12

Call to Artists is available to download from the Bower Center website

Entry deadline: Jan 14

(This is a one week deadline extension)

The Black & White theme will be carried over to the reception

Join the fun and dress in black & white!

Bower Center welcomes two new tenants ...

Betsy McCrodden, Wharton Board member who is the President elect of the Wharton Memorial Foundation Board of Directors, will maintain a studio on the third floor.

Next to her is the newly relocated office of the **Bedford Genealogical Society**. The Society will be hosting a speaking engagement by author Connie Lapallo who wrote *Dark Enough to see the Stars in a Jamestown Sky* and *When the Moon Has No More Silver*, books that contain historically accurate information about the early Virginia families and would be of special interest to their descendants, genealogists and historians. Hear Connie on Saturday, January 14 at 1:30 PM in the Bedford Public Library, 321 N Bridge St in Bedford.

Other tenants include an office for the Bedford Lutheran Church and studios for resident artists: Sally Carter, Nancy Laurent, Janie Mantooth and Dotti Stone.

Winter/Spring Classes & Workshops - 2012 - check website for details/registration

Tai Chi

On going class with Steve Garay
Mondays 6:30PM-7:30
A new form will be started Jan 2

Oil Painting - Youth class

With Judy Hylton
6 sessions
Begins:
Saturday, Jan 7 10:30AM-11:30

Drawing

with Reville Hamilton
8 sessions
Begins :
Tuesday, Jan 24 10:30AM-noon

Advanced Pottery

with Debbie Hughes
8 sessions
Begins :
Monday, Jan 9 6:30PM-9
and again
Monday, Mar 19 6:30PM-9
No class April 9

Introduction to Mosaics

with Dotti Stone
8 sessions
Begins:
Thursday, Feb 16 6:00PM-8:30
No class March 1

Oil Painting - Adult class

With Judy Hylton
6 sessions
Begins:
Saturday, Feb 18 9:30AM-11:30

Introduction to Digital Photography

With Dan Lunde
Begins:
Tuesday, Feb 21 6PM-9

Beginning Pottery

with Debbie Hughes
Ages 15 & up
8 sessions
Begins:
Tuesday, Mar 20 6:30PM-9
No class April 10

Check back for starting dates for:

Intermediate/Advanced Digital Photography

This class is not confirmed, but is tentatively planned

Music lessons

Guitar: Gary Mellas
Violin: Heather Southard
Viola & Suzuki Violin:
Sally Carter

Future concerts

The Feb 11 Karen Nichols' concert is cancelled due to health issues - it will be rescheduled as soon as Karen gives the signal!

A notice will go out if a new February concert is put on the calendar

Mar 2: Joe Nigro and The James Piano Quartet

Apr 21: Little Mountain Boys

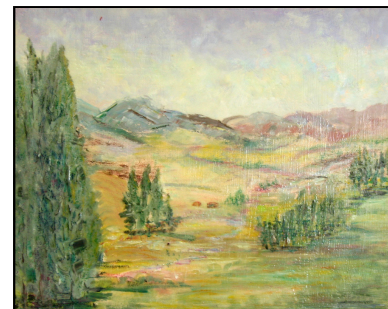
Blue Ridge Voices

This singing group, formed by singer-songwriter Karen Nichols, Conductor, has begun a winter break Rehearsals resume Feb 17 thru the end of May 2012

Call Ms Nichols at
540-586-1446
Learn how you can join this group, aged 12 and up.

BACK AGAIN!
2 day workshop
If you missed it in the fall, you have a second chance!

Encaustic Wax Painting
with Donna Nevers
Feb 4 & 5 - 9:30-4:30



"Beautiful Blue Ridge" by Donna Nevers

2012 exhibits

April 4-28:
Brobeck father/son exhibit
at Bower Center & Goose Creek

May 2-26:
Middle & High School Art

June 6-July 14:
Smith Mountain Arts Council
an invitational exhibit

July 25-Sept 15:
Summer theme exhibit:
Theme TBA

Sept 26-Nov 19:
an all-media theme exhibit for the
annual gala & Bower Center
Theme TBA

Dec 5-Jan 12, 2013
Bedford Photography Club

Preliminary plans for 2013 exhibits are in the works check often for updates to exhibits calendar

WRITE NOW

Writings from members of WRITE NOW .

Where are you from?

by Coby Pieterman

I have been asked that question many times over the years. When we first lived in the United States I thought, it was because of my accent, but soon I discovered that it was a way for American people to connect. Where are you from?

I enjoy answering that I am from Thaxton, where I live today. Of course I know people want to know where I am really from so I wait till they come back with. Yeah, I know, but where ARE you from? and because they really want to know, I answer.

I tell them that indeed, I am not from Thaxton, even though it starts feeling like that after having lived there for 19 years now. Neither am I from Chantilly in Northern Virginia where our family lived for 18 years and where our daughter and son grew up. I am not even from Hingham, Massachusetts, where our family lived for 2 years after we "landed" in the United States and where we made fast friends from Dutch origin. We didn't live there long enough to pick up the distinct Boston accent, but we can pick it out anywhere in a crowd! Neither am I from Weymouth, Massachusetts, where our son was born.

I am not from Waterloo, Belgium either, where for two years we had to speak French, while Case worked in Brussels. I am not even from Vlaardingen, The Netherlands, where we lived after we were first married and where our daughter was born.

I'm sorry that I have delayed answering the question for too long. I am from Rotterdam in The Netherlands, a tiny country in Europe on the North Sea across from Great Britain and bordering Germany on the East and Belgium on the South. A country of tulips and wooden shoes and a country with more bikes than possibly anywhere in the world (except for China), because we have so few hills. It's always fun to go back and see the horizon at the end of endless stretches of farmland. A country where wooden shoes are still worn by farmers and people who work in their gardens. A country where the Keukenhof, with its marvelous flower display in the

spring, is world renowned. Where beaches have beautiful white sand and where dunes all along the coast protect the inland from flooding.

I grew up seeing water everywhere and I thought nothing of it, until I went to school and learned about the lay of the land and how our forefathers won land from the sea and made it into the size it is today . Just as a comparison: Virginia is 2 1/2 times the size of the Netherlands, but the Netherlands has twice the population of Virginia. I was born in the city of Rotterdam, where in the month of December it was so crowded in the stores that at all times you bumped into people or they bumped into you, without apology. I thought Americans were really polite, apologizing when once in a while they would bump into me, Why did we never do that in Holland? The apologies would have been constant, that's why.

Where am I from ? Now you know.

Christmas still on your mind? Try this little story to bring back memories.

The Christmas Train by R S Bull

The Christmas Train made its Maiden run on December 25, 1939. The rookie engineer Bob was in full control on this first trip out of the terminal.

Earlier that day, four year old Bob was at home low on his belly crawling under the tree desperately searching for any present to rip open. His theory was if it didn't have his name on it, then it had to be mislabeled and belonged to him. Everyone else in the room, and this included his sister Jean, told him that the well was now dry. Bob, however, knew better. There **had** to be more than socks, underwear, crayons attached to an Uncle Remus coloring book, a plastic airplane, 99 fighting army figures and a 5-pound box of mixed, salted nuts. Oh yes, there was a pair of yellow and green pajamas from Aunt Ada. After all, he had been listening to the entire sawing, sanding and hammering efforts going on down in the cell for over a week. When he tried to sneak down, he was cut off at the pass by his father and besides his grandpa was nowhere in sight. Grandpa Smith was a real engineer on the railroad and surely he would be upstairs trying to find something called Four Roses under the tree. So, after

shedding a ton of tears, Bob tripped back to the rest of the family and the comfort of Grandma's lap and an anise reindeer cookie.

It was at that moment Bob heard the mournful wail from a 2-6-2 yard-duty steam engine. Deep in his heart, he knew something was terribly wrong. It was too close to home. It could not be from the "hump" down by the factories. It must have derailed and plowed through the cellar doors. Dad and Grandpa could be badly hurt. It was now up to him to check on the carnage. He flew down the stairs and rounded the corner. There it was. Right next to Grandma's sink and hand-crank dryer. Engine 1666 with it's tender waiting to pull a yellow boxcar loaded with candy bars, a logging car, a Sunoco oil tank car, and a shiny red caboose. It was all his and ready for him to use from that moment on to today and all points forward.

NOTE: Want to run 1666, Come to the train show at the Bedford Museum any Monday, 10AM-5PM 'til the end of January and be read to hang your head out of the window of the cab!!!

Short's Pond by Betsy Mercer

The wind is calm as I walk toward Short's Pond. The skates bump my back with each step, urging me to start my practice session. I sit on the bench, slowly lacing my skates, and pause to look at the rising sun's reflection off the glare ice. The stone bench is not a place I want to linger so I push off with my left foot, hearing the familiar sound of the blade, like scraping frost from a windshield. Deep breaths pierce my lungs, clearing the last remnants of sleep. Now I am into the routine, arms swinging as I make multiple circuits around the pond. I find the back and forth sweeping of my legs erasing worries from my mind as I concentrate on the ice ahead. I am becoming one with the frozen world, always listening for the subtle clicks that signal cracks in the ice. But the night was cold enough so the ice is clear, there has been no thawing and refreezing, no pressure ridges to throw me or my concentration. I am relaxed as I skate past my own breath, briefly, brilliantly white in the sun.

Cont'd on page 4

Short's Pond, cont'd from page 3

The wind starts to pick up, rattling the bare branches. Skating into the wind changes my rhythm. I am booted by the wind down the east side of the pond and even have to slow down for the turns. Then I am aware of having to work harder to get back up the stretch of ice. The earlier tranquility escapes and I reluctantly turn back towards the bench and the walk back up the hill to home.

Join **WRITE NOW**

Love to write? Want the camaraderie of others who do and to explore different writing styles? Join the **WRITE NOW** group and share your creative writing with others. See contact information in the third column on this page.

Bedford Genealogical Society courses

Beginning Genealogical Research

Saturdays: 9AM-noon
Feb 11, 18, 25, Mar 3
\$15/person
\$20/couple

Internet Genealogy Research

March dates

Call 540-466-4247 or
email:
bedfordgensociety@hotmail.com
For more information and
registration forms

Organizations meeting at Bower Center

1st Wednesday, 10AM

Blue Ridge Chapter of the Embroiders Guild of America

Contact: Nina Thomas
ninaandbick@gmail.com



One of our members will teach the **January & March** project, "Autumn Splendor," designed by Cindy Valentine, a national teacher. The finished product is a needle book and scissors fob pair. Cost is approximately \$25.

Shading and color mixing using threads is the focus of the **February** program to be conducted by Susan Hughes, the chapter President. A practice canvas will be used to mix the threads based on national teacher Deborah Forney's techniques taught in an earlier class.

Please email needlewich@aol.com if you plan to attend.

1st & 3rd Thursday, 7PM

WRITE NOW - writer's group

Contact: Betsy Mercer
betsy.merc@gmail.com

2nd Monday, 7PM

Bedford Photography Club

Contact: Katharine Hoffman
oneroguetigger@yahoo.com
k8hoffman@yahoo.com

4th Tuesday

Bedford Chants

Tom & Patsy Martin
patsyarnoldm@yahoo.com

4th Sunday, 3 PM-5

Bedford Knitters

Contact: Dana Soltani
danaknits@aol.com

Try Bower Center for your meetings

The Bedford Photography Club Theme: Churches



"Old Bold Branch Church" by Edward Harris



"Church at Dawn" by Donna Kalinski



"Heavy Church" by Edward Wennerstrom

Love photography? Join this group who love to challenge their creativity with monthly themes



Wharton Block Party

New spring date

Sunday, April 15, 2012

Mark your calendar for fun, music and food in Wharton Memorial Garden

Stay tuned for further details



Bower Center and Wharton Garden for your next social event???

Garden wedding in the gazebo? Birthday party or anniversary?

Indoor and outdoor events may be scheduled. Kitchen facilities on the premises.

Call or drop in for information.

Bower Center Tote Bags!!!

Do you have one yet?



Roomy natural canvas tote with black handles
18" w x 15" h x 5" d

Only \$10. + VA sales tax
Available at Bower Center
Cash, Check, Visa, MC, Discover

Volunteer Opportunities at Bower Center

Contact the office to find out how you can become a part of a growing arts center in downtown Bedford.

Join the growing list of Wharton Memorial Garden Bower Center Supporters

Dr John Bower

Aviles, Cristina

Bedford City

Bedford Rotary Club

Bedford Womens' Club

George Cadiero

Keith Campbell

Gene Cocke

Houston Crum

Duis Nursery

Bill Fastabend

Ferris, Eakin & Thomas PC

First Citizens Bank

Patty & Bob Gamache

June Goode

Goose Creek Studio

Gallery & Custom Framing

Mitchell Bond & Patrick Ellis

Robert Holloway

Kiwanis Club of Bedford

William & Rebecca Mays

Marjory Milligan

W T Nolen

Randy Patterson

Dorothy Reynolds

Roslyn Reynolds

Smyth Inc

Target

Dick Thomas

Peter Thomas

VA Commission for the Arts

Suzi Viemeister

Langley Weber

Ed Wennerstrom

Bower Center for the Arts is located at 305 N Bridge St, Bedford VA 24523
540-586-4234 www.bowercenter.org bowercenter@gmail.com

Bower Center Hours

Office & Gallery
Wed thru Sat
11AM - 4PM

The following may be scheduled any day/time:

- Classes
- Workshops
- Special Events
- Concerts
- Meetings & Programs

